



# Yorkshire Ambulance Service (YAS)

**Kirklees Rural District Committee**

**29 September 2016**

**Paul Mudd** – Locality Director, West Yorkshire CBU

**Andrew Simpson** – Head Of Operations, Calderdale, Kirklees and Wakefield



# Presentation Summary

- **YAS NHS Trust Overview**
- **Local overview**
  - Current Ambulance Quality Indicators
    - Red response times
    - Quality of care
    - Demand
- **Current Challenges**
- **Transformation Agenda**
  - ORH Recommendations
    - RRV and DCA cover
    - Kirklees profile
    - Activity maps



# YAS NHS Trust



- 6,000 square miles
- Varied terrain, from isolated moors to big cities
- Commissioned by 23 CCG



- Population of 5.3 million people, over 80 different languages
- 4,600 staff
- Over 1,000 volunteers



- 1,000 vehicles
- 708,883 urgent and emergency incidents
- 886,312 Patient Transport Service journeys



- 795,750 emergency and urgent calls
- 2,180 emergency and urgent calls every day
- Over 1,000,000 calls to NHS 111 (March 2013 – February 2014)

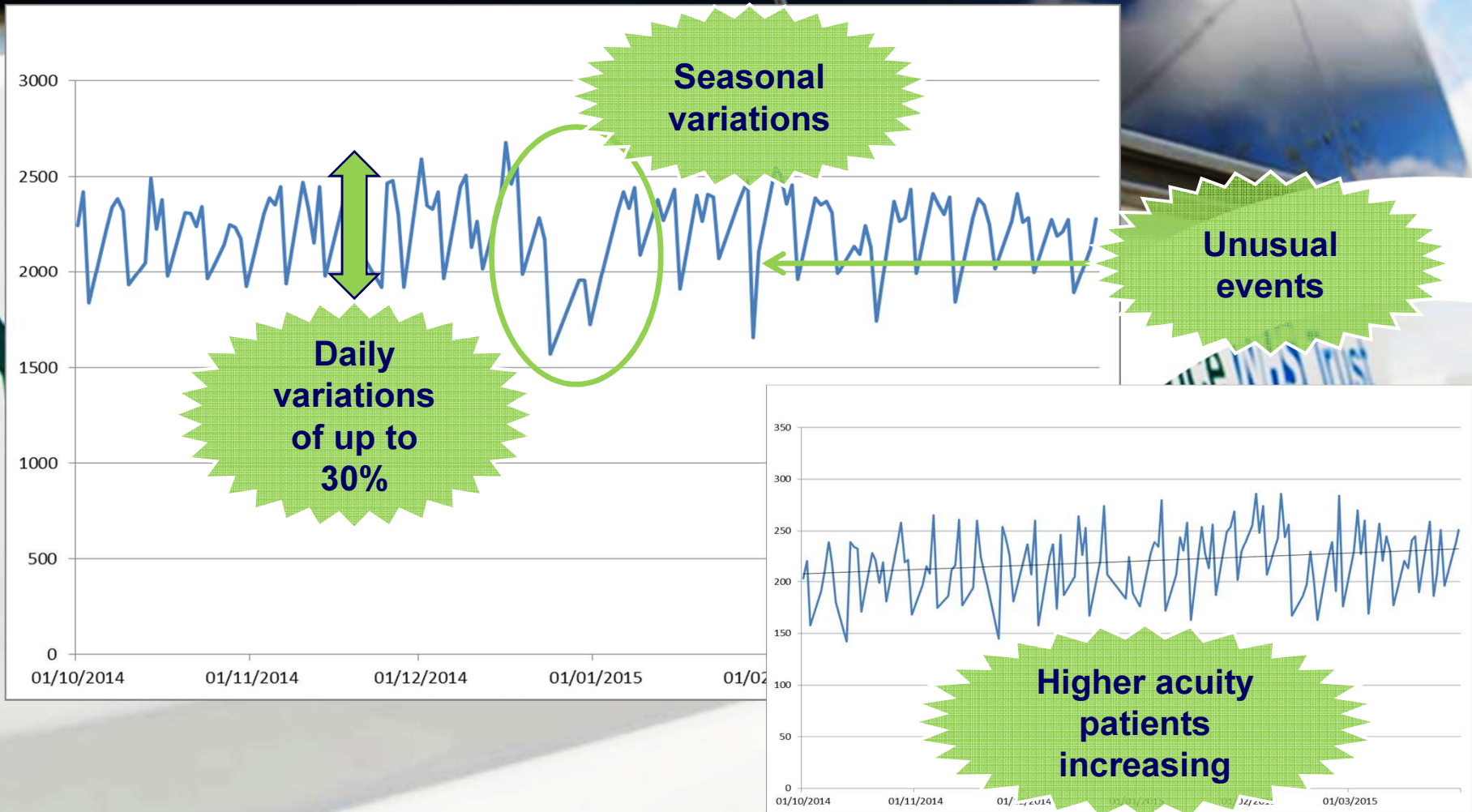


# Current Challenges

- Some of the most demanding response targets in the world
- Further improve patient experience and outcomes
  - Retention of ambulance clinicians
  - Service reconfiguration within Acute Trusts
- Investment in clinical skills of staff to support care closer to home
- Funding constraints across the NHS
- Managing sicker patients for longer
- Rapid rise in demand for healthcare services



# YAS Demand



# Transformation Agenda

- **Band 6 Pay for Paramedics**
  - Improved recruitment and retention
  - More scope to provide paramedic staff with more skills in critical and urgent care
- **Introduction of New Ambulance Roles and Career Framework**
  - New EMT roles provide a clear pathway to becoming a paramedic
  - Allow YAS to develop their own staff in collaboration with the Universities.
- **Review of Service Delivery Model**
  - **An increase in establishment** – YAS NHS Trust will recruit and train an additional 242 full time staff of all grades.
  - **Decrease Rapid Response vehicle (RRV) cover and Increase Double Crewed Ambulance (DCA) Cover**
  - **Review of Rosters**
    - Recommendations at present
    - Place ambulance cover where it is needed based on our historical demand
    - 100% efficient, 95% required

# Greater Huddersfield CCG Overview

## Average Day

- 8/10 Red incidents (8 minute response standard 75%)
- 80/90 Amber and Green Incidents (mainly a 19 minute response standard)

## Current Red Response Time

- YTD – 72.1%
- MTD – 74.1%

## Current Demand

- Demand for emergency ambulances is increasing year-on-year across the whole country
- In Yorkshire and the Humber total demand increases on average 4% every year.
- **Greater Huddersfield CCG is currently 7.6% YTD over the contracted activity levels.** (August 2016 report)

# Gt. Huddersfield Community Resilience

Ambulance clinicians are supported by community resources and education

## Community First Responder Schemes

- 13 Community First Responder Schemes are in Greater Huddersfield

## Public Access Defibrillators

- 70 Public Access Defibrillator sites are in Greater Huddersfield
- Out of the Public Access Defibrillators in Greater Huddersfield three are CPADs

## WYFRS Co-Responder

- Based at Skelmanthorpe

**“Start a Heart” Campaign** – 20,000 school children trained in CPR





# Quality Of Care

Indicator	Yorkshire 2015-16	National Ranking
Return of spontaneous circulation after an out-of-hospital cardiac arrest Utstein	57.3%	2 <sup>nd</sup>
Survival to discharge from hospital after an out of hospital cardiac arrest Utstein	37.6%	2 <sup>nd</sup>

## Yorkshire has England's best survival rates of cardiac arrest

The survival rates for patients who suffer an out-of-hospital cardiac arrest are better in Yorkshire than anywhere else in England.

According to the latest figures, 106 Yorkshire Ambulance Service NHS Trust (YAS) patients whose heart stopped beating were resuscitated and discharged from hospital between January and September 2015, a 20% increase on the same period the previous year.

These figures have been steadily improving over the last few years thanks to a number of initiatives introduced by YAS to help achieve its vision of being a world leader

in the management of patients in cardiac arrest.

Yorkshire Ambulance Service can now boast the highest overall performance for patients in cardiac arrest who go on to survive being discharged from hospital compared to the other 10 English ambulance trusts.

In 2014-15 YAS achieved a survival to discharge rate of 40.9% against a national average of 26.3%.

For 2015-16 (the figures for which currently go as far as September 2015) YAS is again top with 41.3% (the national average is 28.2%).

Dr Julian Mark, Executive

Medical Director at YAS, said: "This is great news for the people of Yorkshire. As an ambulance trust, we are committed to becoming a world leader in the management of patients in cardiac arrest.

"We have implemented numerous initiatives to help us achieve this and will continue to look at new and innovative ways of working for the benefit of our patients.

"Long gone are the days when the ambulance service was purely a logistic service to transport a patient to hospital. We are now an advanced life-support service which brings critical care to the patient."

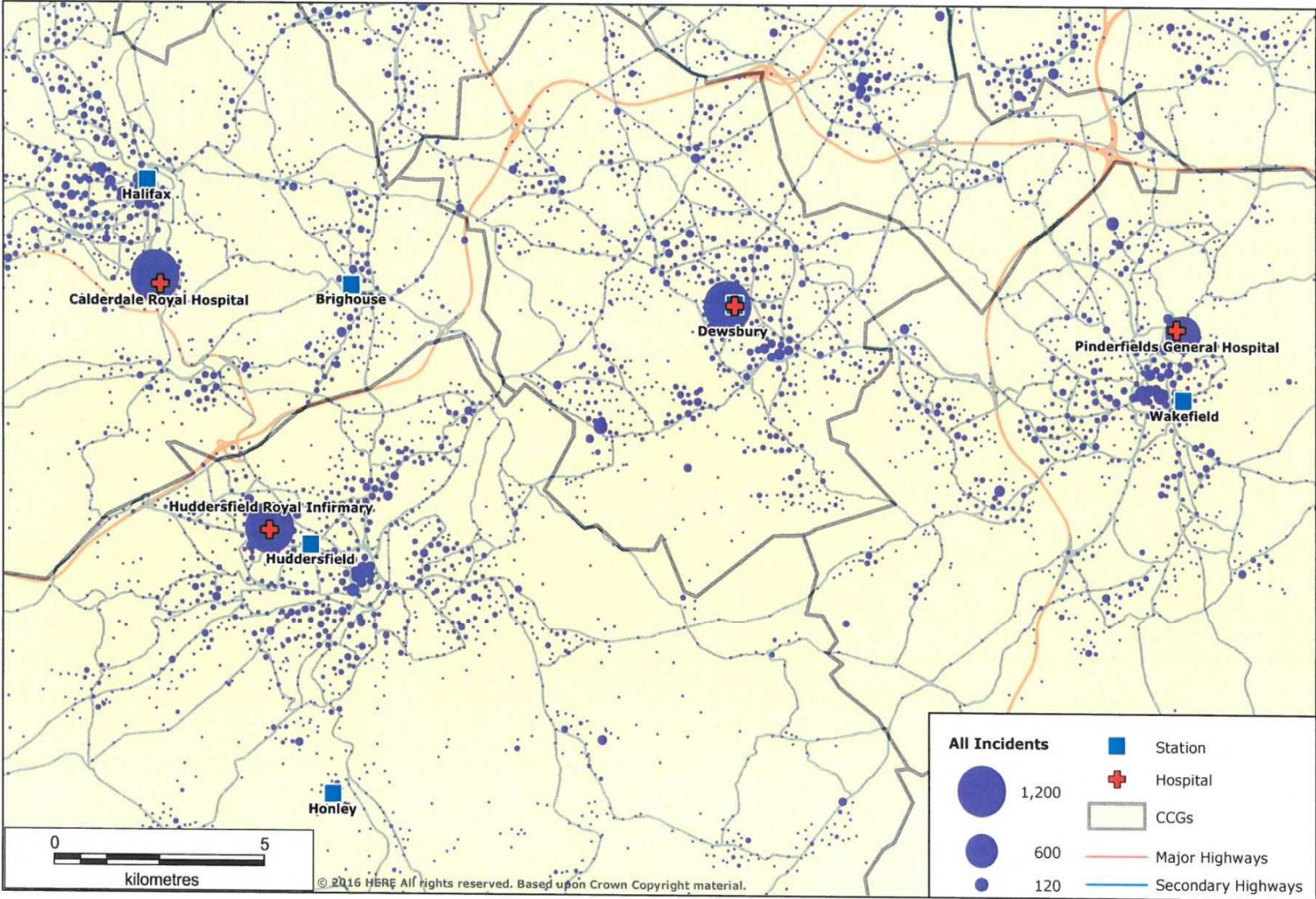
# ORH Recommendations for Kirklees

- Recommended changes to core ambulance provision.

	Honley		Huddersfield		Dewsbury		Total	
	DCA	RRV	DCA	RRV	DCA	RRV	DCA	RRV
<b>Current</b>	8	4	16	8	8	12	32	24
<b>Proposed</b>	5	2	18	8	14	6	37	16
							5	-8

- Increase in relief establishment from 25% to 35%

### Station and Hospital Locations with 2016/17 Demand



# Red Incident "Heat" Maps – July 2016, Gt Hudds CCG

